

Prescott Park Master Plan



City of Portsmouth
Weston & Sampson's Design Studio
Gene Bolinger, RLA
Cheri Ruane, RLA



Prescott Park Master Plan
December 12, 2016

Weston & Sampson™
DESIGN STUDIO

Prescott Park Master Plan



Today's Presentation

1. The Preferred Plan (with revisions)
2. Additional Perspective Views
 - A. The Bowl (with performance & without)
 - B. Civic Fountain at the Public Forum
3. Movable Stage Information
4. Phasing & Costs
5. Site Furnishing Selections



Prescott Park Master Plan



Prescott Park Master Plan
December 12, 2016

Weston & Sampson™
DESIGN STUDIO

Prescott Park



Prescott Park Master Plan
December 12, 2016

Weston & Sampson™
DESIGN STUDIO

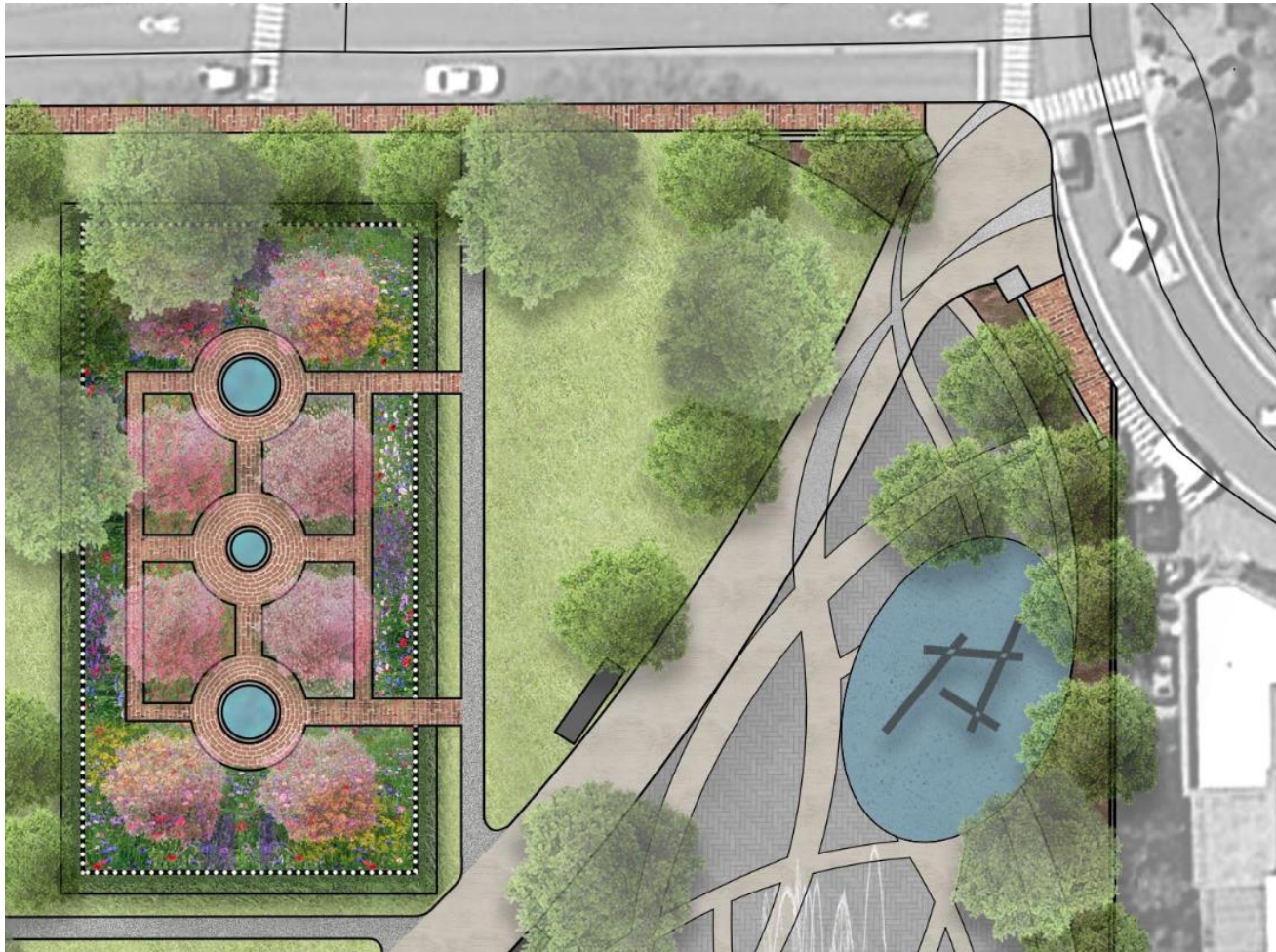
Four Tree Island



Prescott Park Master Plan
December 12, 2016

Weston & Sampson™
DESIGN STUDIO

Park Entrance at Marcy Street & State Street



Park Entrance at Marcy Street & State Street



Prescott Park Master Plan
December 12, 2016

Weston & Sampson™
DESIGN STUDIO

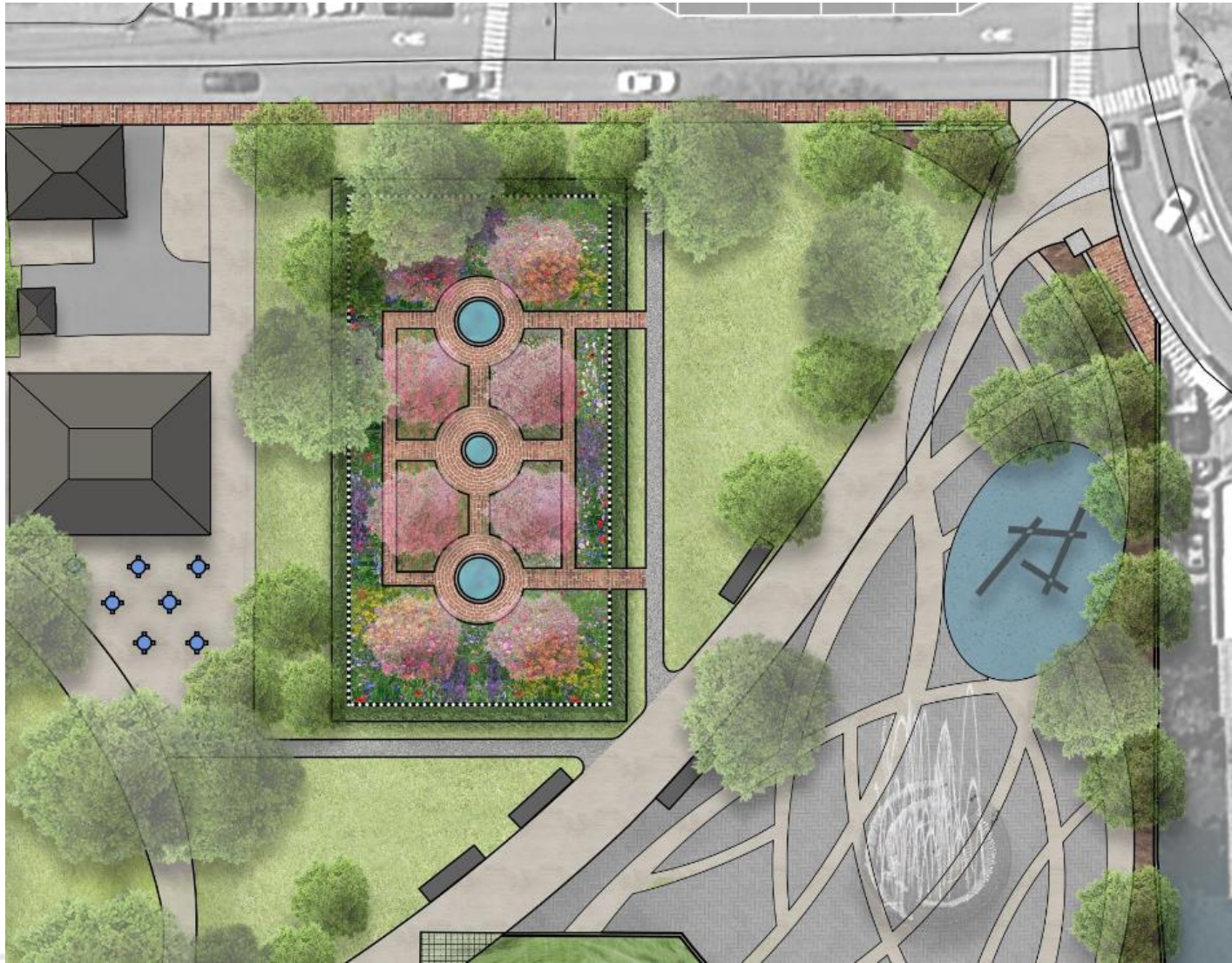
Public Art & Play



Prescott Park Master Plan
December 12, 2016

Weston & Sampson™
DESIGN STUDIO

Formal Garden



Prescott Park Master Plan
December 12, 2016

Weston & Sampson™
DESIGN STUDIO



Prescott Park Master Plan
December 12, 2016

Weston & Sampson™
DESIGN STUDIO



Formal Garden



Prescott Park Master Plan
December 12, 2016

Weston & Sampson™
DESIGN STUDIO



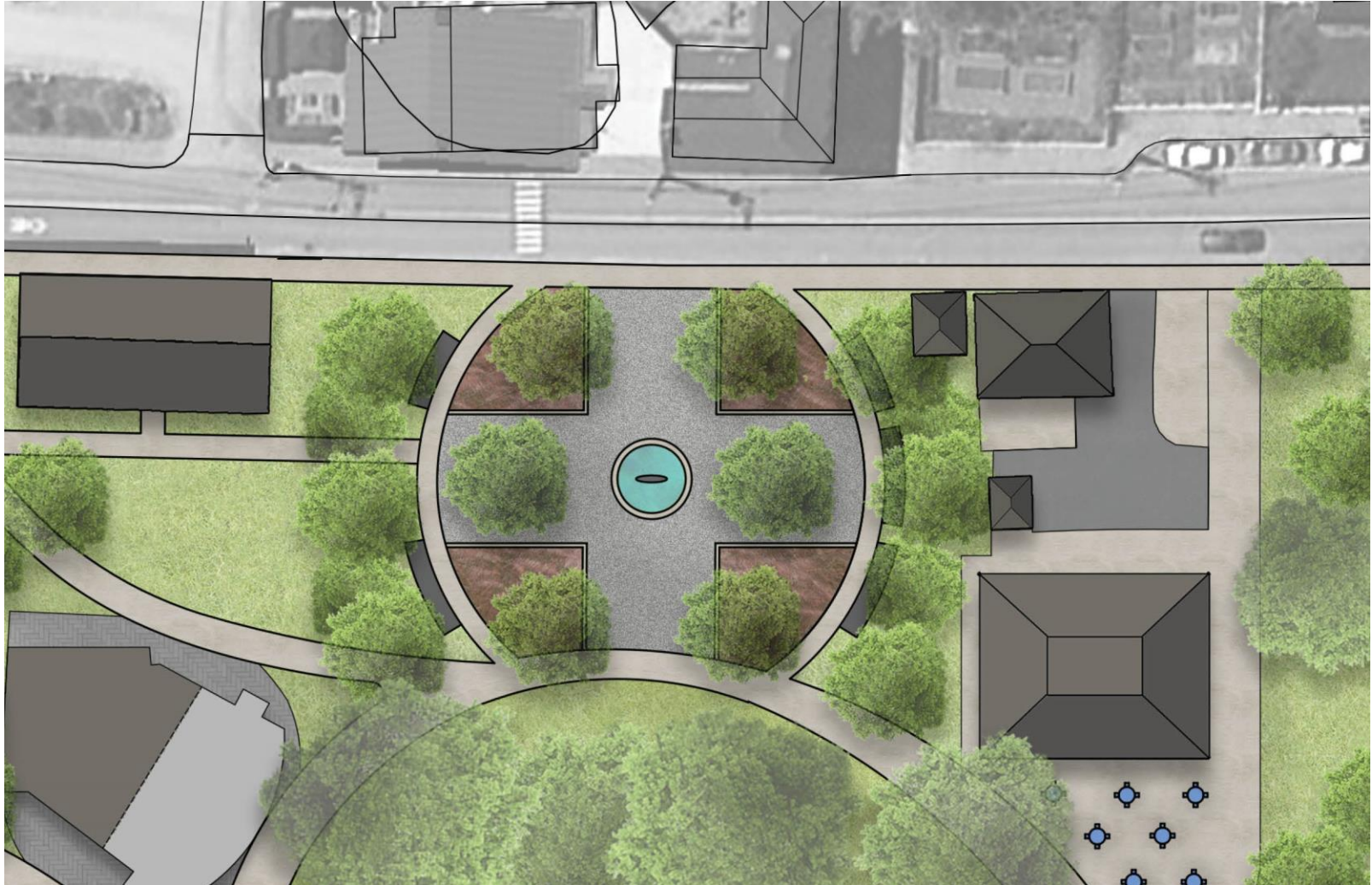
Formal Garden



Prescott Park Master Plan
December 12, 2016

Weston & Sampson™
DESIGN STUDIO

Hovey Fountain Entrance on Marcy Street



Prescott Park Master Plan
December 12, 2016

Weston & Sampson™
DESIGN STUDIO

Hovey Fountain Entrance on Marcy Street



Prescott Park Master Plan
December 12, 2016

Weston & Sampson™
DESIGN STUDIO

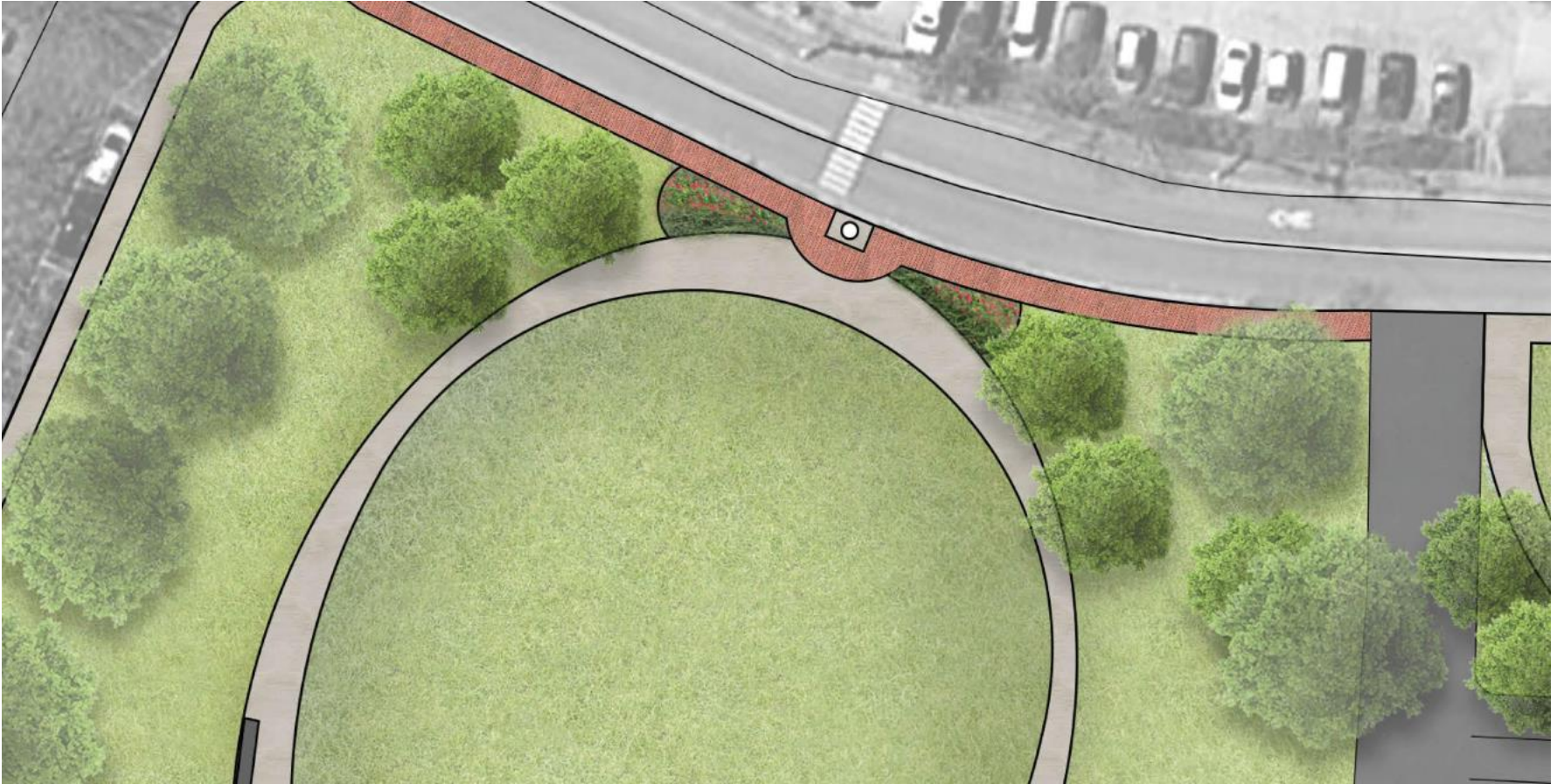
Hovey Fountain Entrance on Marcy Street



Prescott Park Master Plan
December 12, 2016

Weston & Sampson™
DESIGN STUDIO

Liberty Pole Entrance



Prescott Park Master Plan
December 12, 2016

Weston & Sampson™
DESIGN STUDIO



Prescott Park Master Plan
December 12, 2016

Liberty Pole Entrance

Weston & Sampson™
DESIGN STUDIO

Display Gardens



Prescott Park Master Plan
December 12, 2016

Weston & Sampson™
DESIGN STUDIO

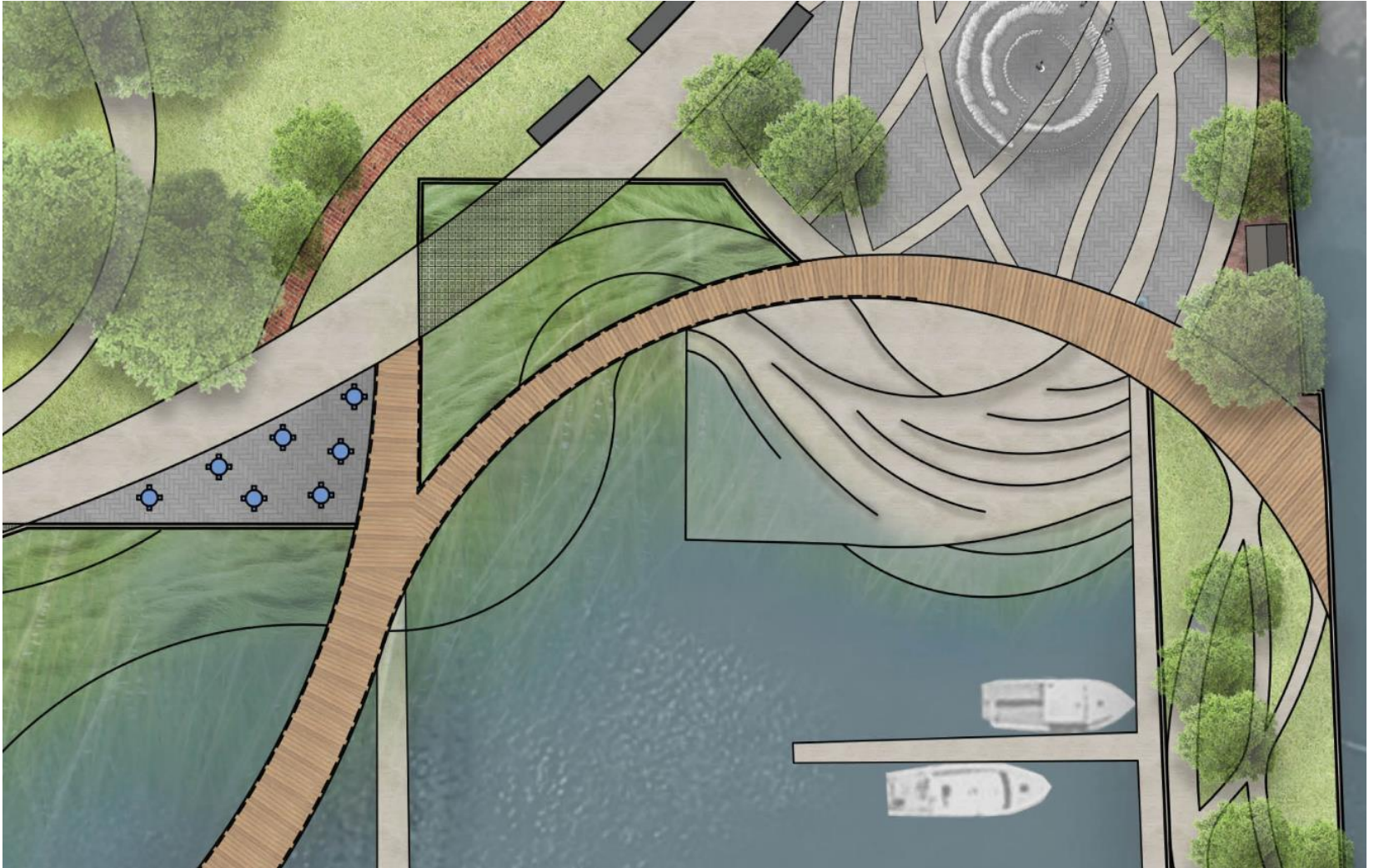
Display Gardens



Prescott Park Master Plan
December 12, 2016

Weston & Sampson™
DESIGN STUDIO

Waterfront



Waterfront



Prescott Park Master Plan
December 12, 2016

Weston & Sampson™
DESIGN STUDIO



Prescott Park Master Plan
December 12, 2016

Weston & Sampson™
DESIGN STUDIO

The Bowl





Prescott Park Master Plan
December 12, 2016

Weston & Sampson™
DESIGN STUDIO



Prescott Park Master Plan
December 12, 2016

Weston & Sampson™
DESIGN STUDIO



Prescott Park Master Plan
December 12, 2016

Weston & Sampson™
DESIGN STUDIO



A Moveable Stage Facility

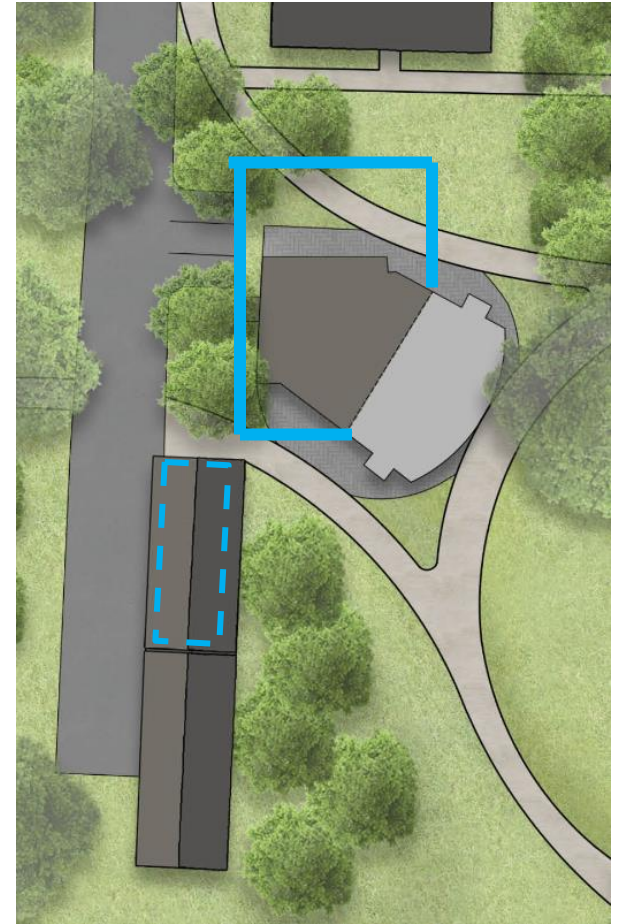


Prescott Park Master Plan
December 12, 2016

A Movable Stage Facility

Portable Stage Findings

- Stages can be rented or purchased
- Professional companies will store, set up, inspect, take down and transport the stage facility.
- Stages comply with the full building code and are inspected by city officials
- Screening at the sides of the stage is done with fabric drapes and are taken down after each performance
- A movable sound booth can be located up to 300' away from the stage and can be removed at the end of the season.

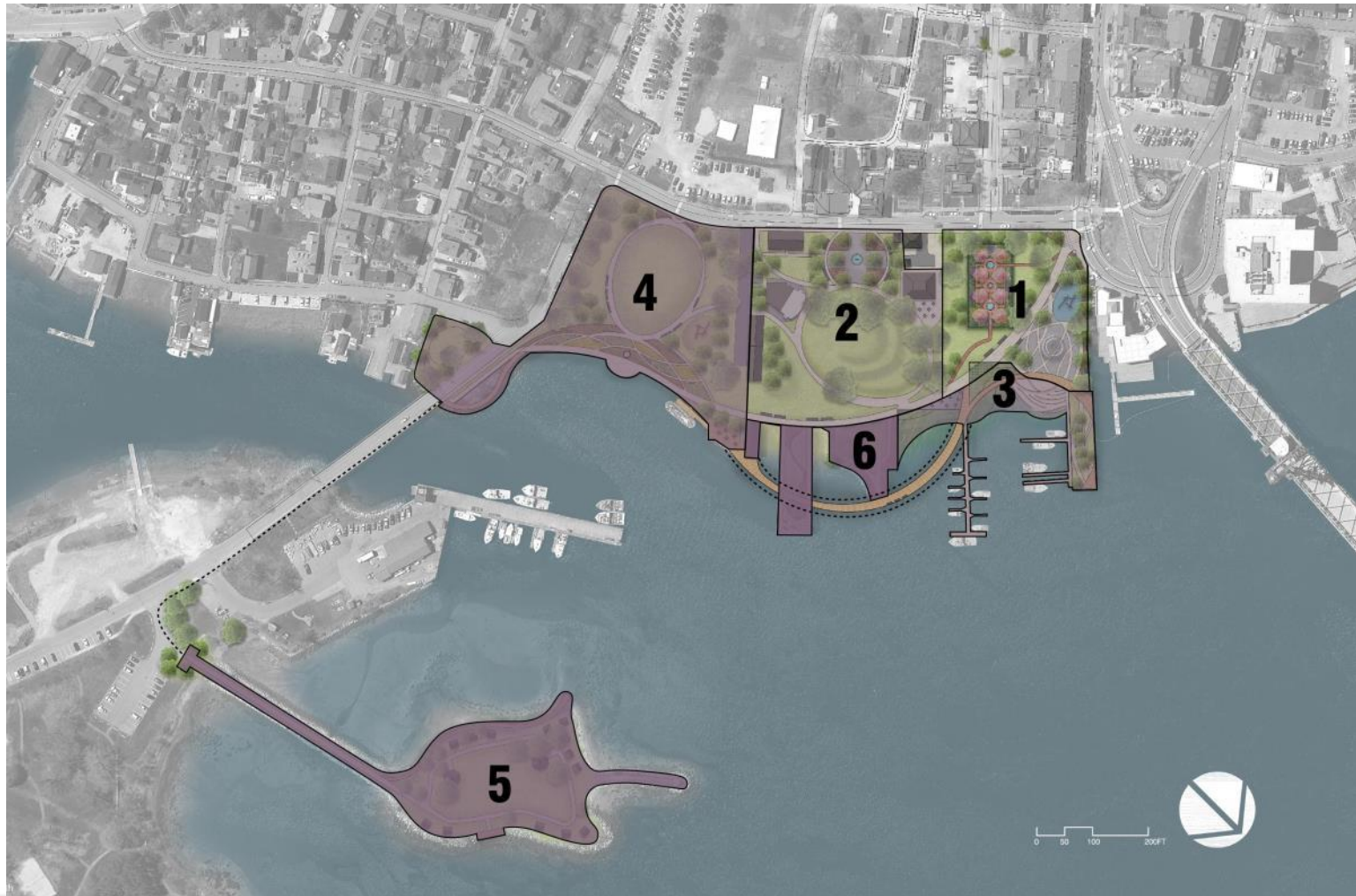


DRAFT Cost of Park Improvements DRAFT

- Costs will be significant (whatever plan is adopted)
- Maintenance has been deferred
- Infrastructure needs are great



Phasing



Prescott Park Master Plan
December 12, 2016

Weston & Sampson™
DESIGN STUDIO

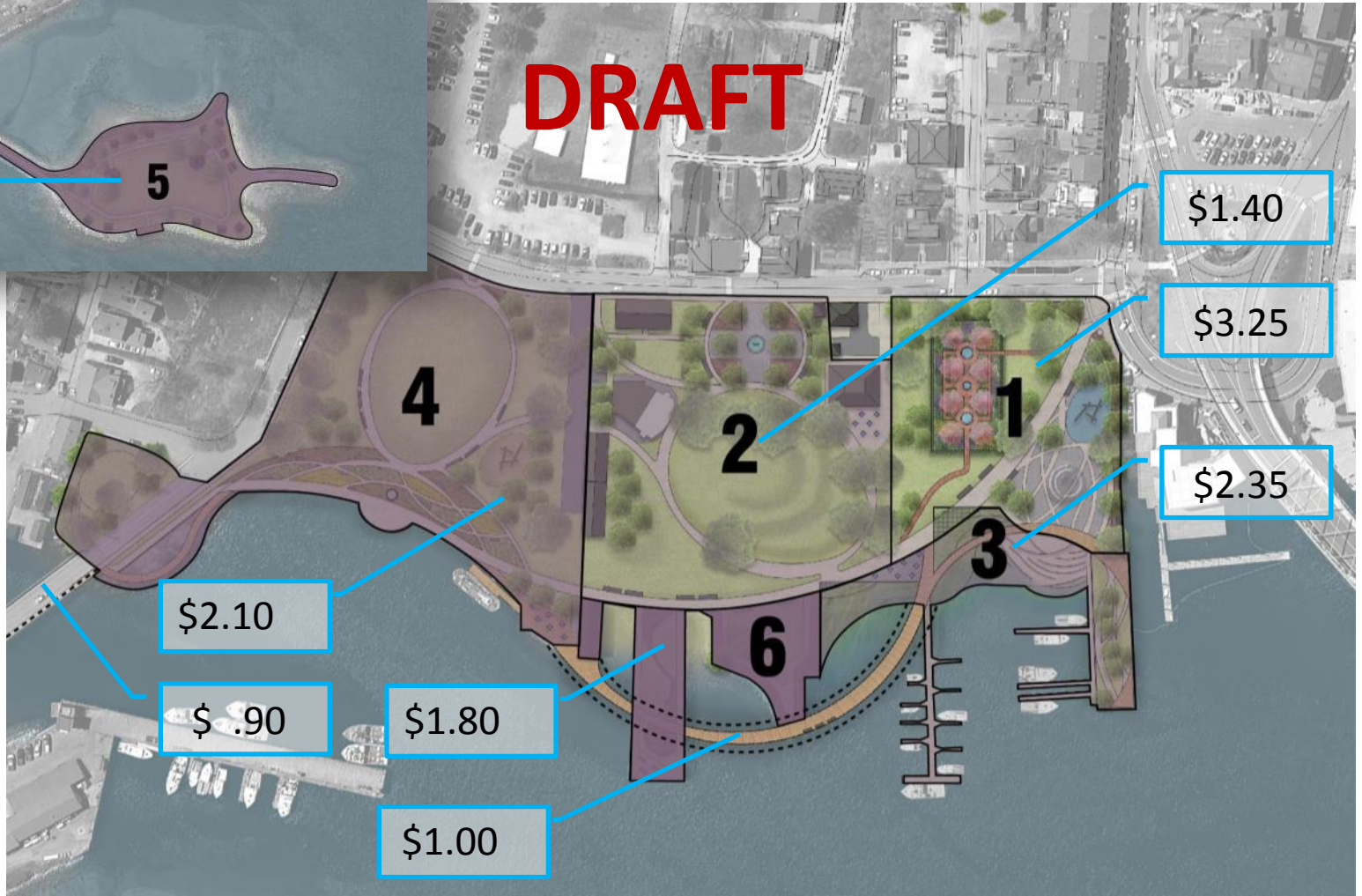


Prescott Park Master Plan
December 12, 2016

Phasing

Weston & Sampson™
DESIGN STUDIO

DRAFT



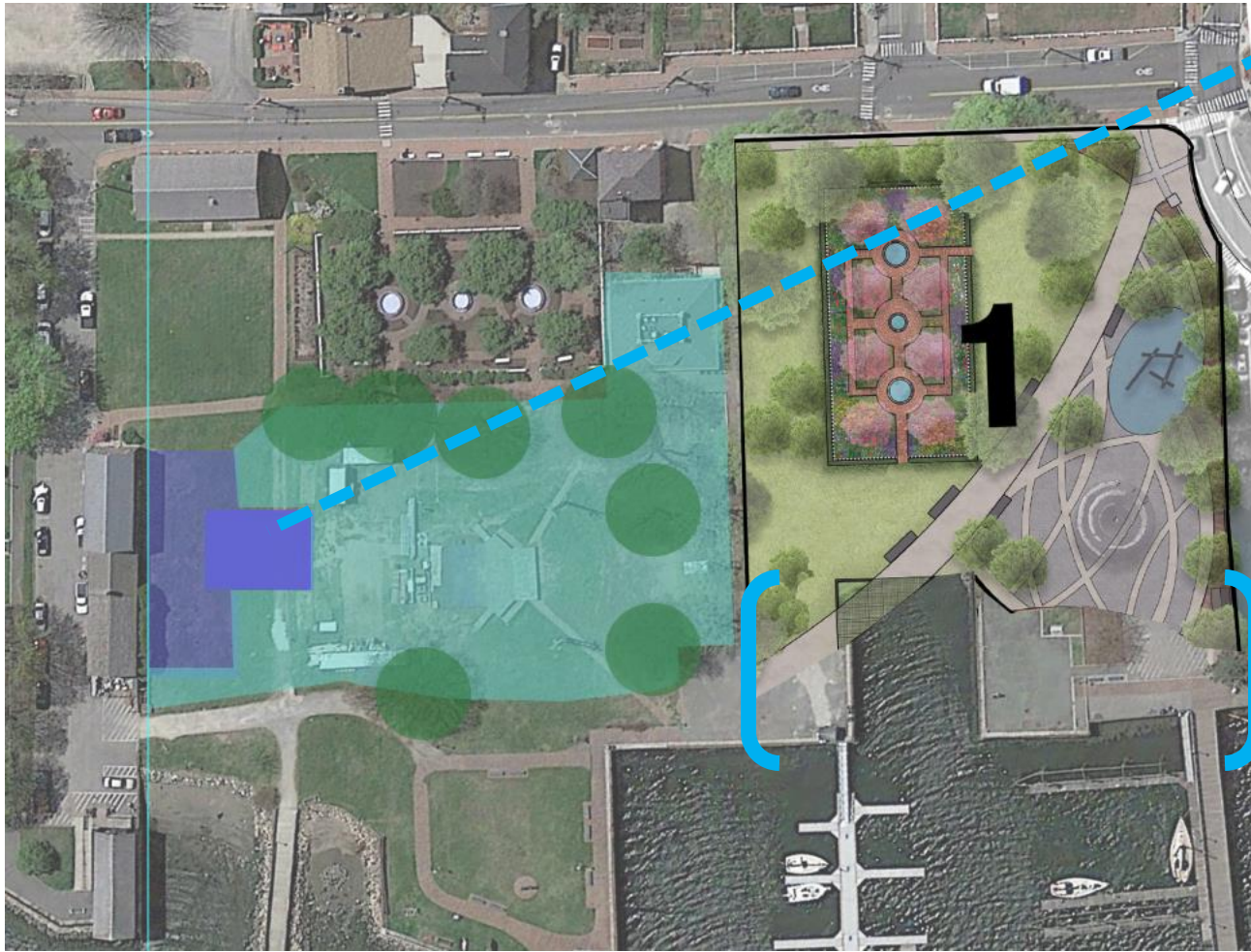
Prescott Park Master Plan Phasing

PHASE		OPINION OF CONSTRUCTION COST
1	Grand Entrance	\$ 3,250,000
2	The Bowl	\$ 1,400,000
3	North Waterfront	\$ 2,350,000
4	The Oval	\$ 2,100,000
5	Four Tree Island	\$ 1,250,000
6	South Waterfront	\$ 1,800,000
	Boardwalk	\$ 1,000,000
	Four Tree Island Ped Link	\$ 900,000
TOTAL		\$14,050,000

DRAFT



Phase 1



- Interim location for moveable stage

PLUS

- Careful coordination between new and existing



DRAFT

Cost of Park Improvements

Total Potential Renovation Cost Averages about \$30/sf

Prescott Park Proper + Boardwalk: \$11,900,000

Four Tree Island + Pedestrian Link: \$2,150,000

Design + Permitting (15% of construction): \$2,000,000



Site Furnishings | Benches



Olympic Wave



Street Life



Limpido



Milenio



Knight



Site Furnishings | Benches



Site Furnishings | Benches



Hammock Bench



World's Fair



Plainwell



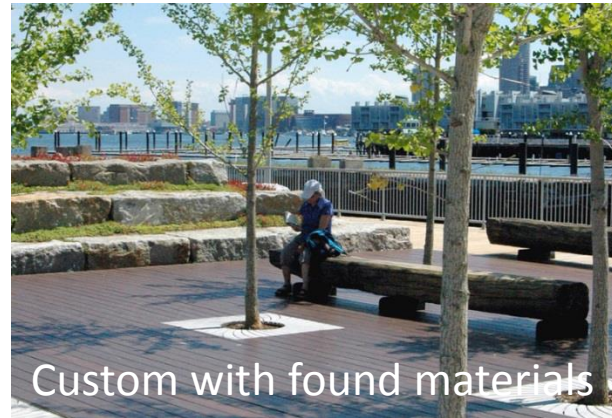
Yanko Design



Trio



Site Furnishings | Benches, ctd.



Site Furnishings | Loungers



35 Chill



Rio



Solid Serif Lounger



Surf Isle - Small



Surf Isle - Large



Site Furnishings | Picnic Tables



Site Furnishings | Lighting



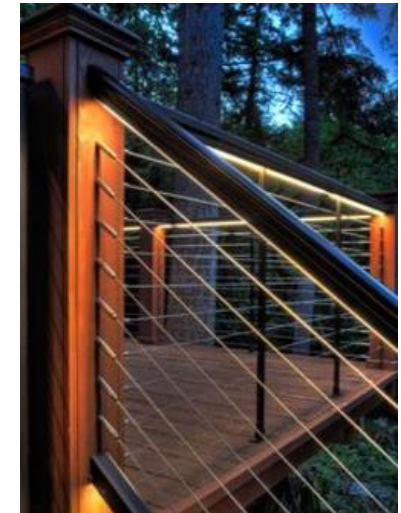
Rough & Ready w/ lighting

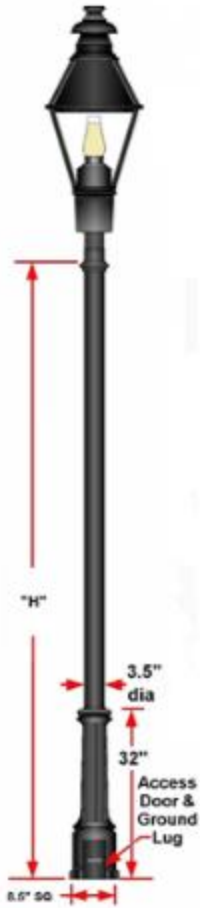


Umbrella w/ up-lighting



Villette





P635
Clifton Post
Philadelphia SLB
Fixture



P636
Cambridge Post
Londonderry Fixture



P640
Baltimore Post
Newporter Bronze
Fixture



P641
Welsbach Post
Boulevard 1000
Fixture



Classic



Transitional



Site Furnishings | Lighting



Ashbury



King



FGP



Trio



Alcott



Cordia

Site Furnishings | Waterfront Railings



Site Furnishings | Crowd Control



Site Furnishings | Wayfinding & Trash Receptacles





Prescott Park Master Plan
December 12, 2016

Weston & Sampson™
DESIGN STUDIO

Conclusion

Questions / Answers



Prescott Park Master Plan
December 12, 2016

Weston & Sampson™
DESIGN STUDIO